



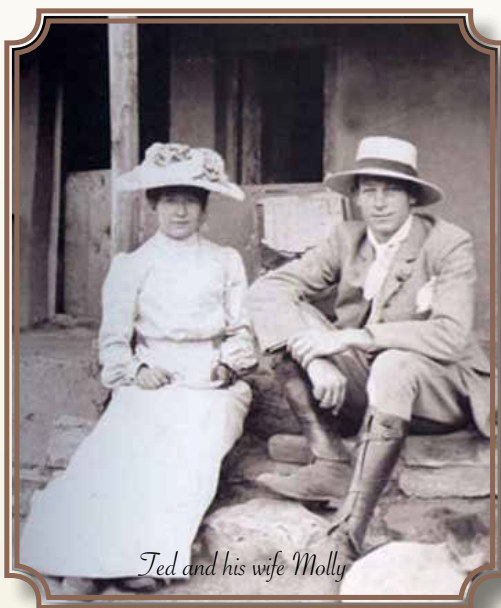
THE AFRICAN EXPLORER

SOUTH AFRICA & BOTSWANA COMBINED

Horizon Horseback's Camp Davidson is perched high in the bushveld above the Matlapeng valley, in South Africa. It offers the opportunity to explore from

a base camp nestled in the heart of the wooded mountains of the Waterberg. The camp commands a wonderful panoramic view of the central highlands of

the Waterberg massif, while overlooking the picturesque Sunset Lake at the eastern boundary of Triple B Ranch.

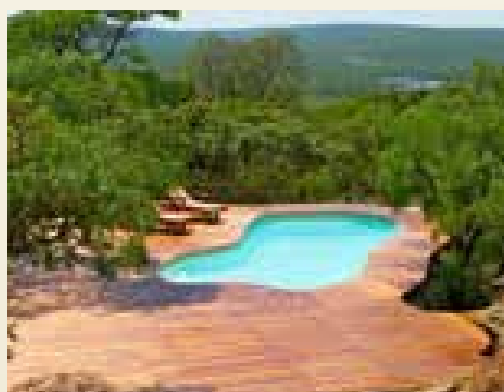


Ted and his wife Molly

In the late 19th century, Ted Davidson, one of the first members of the Baber family (owners of Triple B Ranch) to settle in the Waterberg, was a young man trading by ox wagon to remote cattle outposts of a young ranching area. A good days travelling may have been only five miles or so by rugged track, and so an itinerant life in the Waterberg meant a life by the campfire.

Horizon has captured that early camp atmosphere in Camp Davidson.

Beautiful decked canvas tents are nestled amongst the sandstone ridges overlooking grassy game filled valleys. Each tent is appointed as it would have been in Ted's day with classic items that would have been essential to the traveller accustomed to regular nights in the bush.





Horizon Horseback Botswana operates riding safaris on the vast Mashatu Game Reserve in the Tuli Block of south eastern Botswana.

This is an area of great diversity, magnificent vistas, ancient civilizations and dramatic rock formations bordered by the great Limpopo River in the south. Apty named the “Land of the Giants” for its baobab studded plains and large herds

of elephant, the land remains largely untouched by man and is home to a wide variety of wildlife species including lion, cheetah, leopard, African wild dog, a multitude of plains game like zebra, wildebeest and giraffe, as well as over 350

species of birds.

Both locations offer five spacious and comfortable tents all built on raised decks and equipped with hot showers, flushing toilets, solar lights and lanterns.



Day One: Guests will be met at Johannesburg International Airport and transferred to Camp Davidson in time for a late lunch. That afternoon you will be introduced to your safari horse. We will ensure that you are matched with a horse to suit your ability and experience before heading off on your ride. On route through the Matlapeng reserve, the ride will pass “Red Dam” where you are likely to

encounter our pod of resident hippo, you will then ride to a stunning lookout spot for sundowner drinks before returning to Camp Davidson.

Day Two: A day of exploration in the reserve, tracking giraffe, zebra, eland, wildebeest, kudu and impala. We pass “Sunset Lake: where resident fish eagles and Spur-Winged geese are often spotted and its shallow banks give us a great

opportunity for some great photo opportunities catering through the water. We return to camp in time for lunch and a chance to relax by the pool. The afternoon ride takes us on a ride with a good chance of more hippo viewing and some nice long canters. In the evening there is the option of a night sky safari with a local astronomer who will guide you through the amazing constellations.



Day Three: A morning ride with a chance to track game, enjoy some of our jumping lanes and finish off with a swim with the horses

in one of many reserve lakes before returning to camp for a large and lazy lunch. After lunch we depart for a game drive in a

‘Big Five’ private game reserve, with a chance to see rhino, lion, elephant, buffalo and leopard.

Day Four: A full day ride west of camp takes you to a neighbouring game reserve. This ride offers lovely long canters on sandy tracks and great game viewing opportunities on large plains populated by wildebeest, hartebeest, sable, eland and blesbok among others. Then it's

onto the historic Baber homestead for lunch by the poolside. That afternoon riders return to camp via the local Sotho village and visit Beadle, a craft workshop on Triple B Ranch which has a community upliftment project since 1998. The crafters specialise in beautiful handmade beadwork

and leather products including riding chaps. We finish the day with sundowners at a favorite lookout spot and return to the tranquility of the Camp Davidson where dinner is served under the stars.



Day Five: We leave camp early and riders mount for a last ride through the reserve, soaking up the early morning sights and sounds of the African bush to

the Horizon lodge. Guests depart from the lodge by 9.30 and are transferred to Horizon Horseback Botswana. Once at the stables an introductory afternoon ride

will familiarize riders with their horses for this leg of the safari, arriving at the Two Mashatus camp in time to freshen up before supper.





Day Six: An early wake-up call with tea/ coffee brought to your tent, followed by breakfast around the campfire. We make an early start each day to enjoy the freshness of the morning and to maximize game-viewing opportunities. The group is given the choice of a longer morning ride and an afternoon guided walk, or two shorter rides. Undoubtedly the large herds of elephant for which the Tuli is renowned will be encountered, as well as many different species of antelope. Giraffe, zebra,

bat-eared fox, jackal, hyena and possibly even lion, leopard, wild dog and cheetah can be seen.

You will arrive back at Two Mashatus camp in time for lunch and a cooling afternoon in the shady camp or lazing by the pool. That afternoon the group have the choice of an afternoon ride or guided walk along the Limpopo River, enjoying the rich birdlife, spotting crocodile in the pools and learning about the magnificent trees lining the banks.

Day Seven: Ride out following the movements of wildlife in the area. The tempo of the rides is always varied and depending on the terrain, there are opportunities to enjoy the spirit and fitness of the horses at a faster pace. The

afternoon brings a chance to enjoy a Mashatu game drive. Mashatu is famous for big cat sightings and this is definitely a wonderful opportunity for keen photographers to capture sightings of lion, leopard, cheetah, hyena and elephant.

Day Eight: After a last morning ride back to the stables there is time for a quick shower and brunch

at the reception area before heading back to Johannesburg International.

Please be aware that due to changes in weather and other unforeseen events the itinerary may be changed at the last minute.

Additional Information

What is included in the price?

Rate is inclusive of accommodation, riding, meals, teas / coffees, drinks, game drives, bush walks and laundry. Only tips and curios payable locally in cash.

Do I need a visa?

You must be in possession of a passport that is valid for at least six months after your return date and has at least 3 blank pages. Visas are not necessary for most countries but we do advise that guests contact their local embassy and make sure they don't need one.

Do I have to pay a Tourism Levy?

You will need to pay a \$30 conservation levy on arrival. We suggest you bring dollars to avoid inflated exchange rates and please bring the correct amount as there is sometimes a lack of change. Other costs such as souvenir shopping and gratuities in both SA and Botswana can also be done in dollars.

What vaccinations do I need?

For South Africa vaccinations are not required however we recommend your tetanus to be up to date. Botswana is a low risk malaria area and no one in the area takes anti-malarias however the official advice is that guests contact their physician and take the necessary prophylactics.

Are hard hats compulsory?

Yes, hard hats are mandatory and you will not be able to ride without one. We can provide helmets, but suggest that clients bring their own. We do not provide half chaps but might have the odd pair should clients need.

What should I bring?

As well as comfortable riding clothes and your hard hat, we recommend the following; Bum bag, lip salve, strong sun protection cream factor 30 or higher, short boots and chaps, (ride/walk boots are ideal) swimming costume, light weight long sleeved shirts, light weight raincoat (Oct – April only), a good body warmer (May – August only) camera, memory cards and spare camera batteries, torch and a good book. Should you ever suffer from ailments such as sinusitis, cystitis, eczema etc we suggest you bring your preferred medication with you

What level of rider must I be?

Guests must be experienced riders. They must ride regularly (at least once or twice a week) and be comfortable at posting trot, light seat canter and gallop as well as being able to do small jumps should they have to. They must be able to control a horse independently of the group at all paces. On arrival in Botswana you will be asked to do a simple independent riding test.

What time are the road transfers?

Day 1: You will make your way to the information desk in the arrivals hall you will then be met at 10.30am. The driver will have a sign saying Horizon Horseback welcomes African Explorer guests. You will be driven to Camp Davidson arriving in time for a late.

Day 4: After breakfast it's a short ride to the Horizon lodge before departing at 9.30, arriving in Botswana in time for a late lunch before the riding test and afternoon ride.

Day 8: You will have the option of a short ride and brunch depart the Botswana boarder post by 12.am arriving at Johannesburg airport by 6.30 pm. Should you need to arrive late or depart early a private transfer will be supplied at additional cost.

N.B. please book flights that arrive into SA no later than 9.30 am and depart SA no earlier than 8.30pm.

Is there a weight limit on luggage?

No

What is the Min and Max number of people I can expect on the trip?

We will confirm a trip for one and normally take a maximum of eight. Private groups can be up to 10 (group leaders of 8 – 10 get a free place). Clients booked onto trips departing with one to four participants may be upgraded on arrival in South Africa to the lodge based signature safari if available.

Are Children allowed?

Children under 16 please enquire, strictly no under 12's.

Is there a laundry service?

Yes we offer a free laundry service at both locations, when packing do bear in mind that it helps not to have too much luggage in Botswana. We can normally turn laundry around within 24 – 48 hours (excluding the 30 or so days a year that it rains!)

What is the accommodation like?

A-frame tents with beds, sheets and duvets this is very comfortable camping. Each tent has an ensuite bathroom with flush toilets and hot water showers (water heated on the fire and placed in a 15 lt camp shower when you are ready).

What are the horses and tack like ?

In both locations The horses have been selected for their temperament and ride ability. They have been carefully chosen from the various South African breeds, which are well known for being of a tougher nature - able to cope under extreme conditions. These breeds include the Boerperd, Shire Cross Thoroughbreds, Appaloosa's, and the S.A. Warmblood. They range in size from 14.3h. to 17h. Saddles are South African McClellan's, a cavalry saddle designed for long hours of riding, they offer particular comfort and airflow for the horses back and padded seats and fenders for the riders comfort.

Do cell phones work?

Yes in South Africa and in a few select places in Botswana. If you want to buy a local sim on arrival the one to buy would be MTN.

Do you have Wi-Fi?

Yes there is a limited service in both locations.

Useful contact numbers.

For any queries please call, whats app, or text Laura on +2783-4191929. Or Kirsty on +27734826131. In the case of a badly delayed flight please also text +27812962235.

Money

We suggest you exchange your cash into dollars, you shouldn't need local currency as your holiday is fully inclusive. Gratuities, onsite curio shopping and the Botswana tourism levy can all be paid in dollars. Should you need any emergency items the lodges can help exchange small amounts.

Is there electricity?

In each tent in both locations there is a small solar charger that can charge most cell phones with a USB port.

What happens if I fail the Botswana riding test?

The guides in South Africa will be able to assess your riding skills and will advise on your suitability to ride in Botswana. Should they deem you not able to ride in Botswana you will be given the choice of going to Botswana and having shorter private rides from the stables or if space allows you may stay at the Horizon lodge for the three days and carry on with the safari riding.